

Mini-Track Paver Model TP44-TD



The Go-Anywhere Mini-Asphalt Paver!



Pictured above the TP44-TD is shown with the 6" Screed Extensions Option, and Loading Panels Option.

- * Extra Large Drive Motors for Years of Service!
- * Designed with Service & Maintenance in Mind!
- * Clean, Simple, Basic Design!
- * 0-6' Standard Paving Width + Optional Screed Extensions up to 7' Wide!



Tracks are fixed at 38" to accommodate screed style.

"My Salsco Track Paver is a great little machine. Its durable manufacturing quality & accessibility to parts, make it an efficient machine to use on all my sidewalk & trench jobs. Also, considering the small crew it takes to run, and its overall ease of operation, I know I'm getting maximum productivity whenever it's on the job."



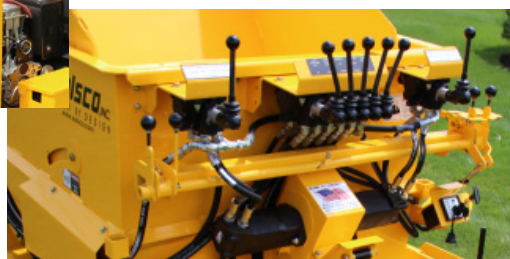
Hydraulic Tilt Hopper. Hopper easily bolts together. Raise the complete hopper for ease of maintenance.



Extra Large Cut Off Door with two (2) Cylinders & Flow Regulators that open the door evenly & smoothly.



Hydraulic End-Gates move in & out, and have rulers on the top of the end gate to see where they are.



All controls are on the rear of the machine, including the Key Switch & Throttle.



Two (2) 9" Cast Augers are independently operated both Forward & Reverse.



Quality of Workmanship, Innovative Design, Built to Last!

MINI-TRACK PAVER, MODEL TP44 - TD SPECIFICATIONS & FEATURES

ENGINE:	14HP Hatz diesel, Model 1D81Z-9221, electric start mounted on 1/2" thick steel plate motor mount.
PUMP:	Dual hydrostatic, variable speed. Each section has a displacement of .97 cu. in.
DRIVE MOTORS:	Two (2) drive motors for tracks - 28.7 Cu.In. Displacement. Two (2) drive motors for augers - 24 cu. in. displacement.
HOSES:	SAE JIC hose ends & fittings. 3,000 P.S.I., working, 12,000 P.S.I., burst.
BATTERY:	12 volt, automotive type, 850 CCA.
FUEL TANK:	Steel, 8.9 gallon capacity.
HYDRAULIC TANK:	Steel, 8 gallon capacity
HOPPER:	Dual hopper, 1/4" thick, steel plate. Inside hopper tilts to 52° angle for ease of dumping material. 1.85 sq. yd. capacity
SCREED:	40" wide, with crown/invert adjustment, power end gates and end gate adjustment plates for uniform texture.
AUGER ASSEMBLIES:	Two (2) 9" cast augers, with independent hydraulic drive, forward and reverse.
DRIVE:	Hydrostatic; variable forward and reverse.
TRACK ASSEMBLIES:	Heavy duty Bridgestone tracks. Tracks are fixed at 38" to accommodate screed style.
CONTROLS:	All controls are located at the rear of the machine over the screed, for ease of operation.
MAIN FRAME:	One (1) piece, 1/4" thick steel main frame. 2" x 2" square tubing supports.
WELDS:	Continuous welds where needed for durability.
GUSSETS:	1/4" gussets where needed for strength.
BEARINGS:	Cast iron, heavy duty, greaseable.
CHAINS & SPROCKETS:	#80 chain and sprockets.
PAVING SPEED:	0 - 50' +, per minute.
PAVING WIDTH:	24" to 72".
PAVING THICKNESS:	1/4" - 5".
OPTIONS:	6" Screed Extensions; Hopper Panel Extensions; Cut-Off Plates.
GUARDS/DECALS:	All moving parts guarded. Full set of safety decals.
PAINT:	Powder coat baked enamel polyester finish; resists ultraviolet light. Safety yellow.
DIMENSIONS:	Length: 9' 4" (with step up), Width: 3'8", Height: 3' 11" (from the ground to the top of hopper). Weight: 4,400 lbs. (Approximately)
WARRANTY:	1-year standard warranty

Specifications & Options Subject to Change Without Notice

REV. 6-8-2020

MANUFACTURER OF OUTDOOR POWER EQUIPMENT

Products for Turf & Lawn care, Rental, Construction, Tree Care, Wood Processing, Nursery & Farm Industries

3-1/2" - 18" Capacity, Gas, Diesel, & P.T.O. Wood/Brush Chippers

Gas & Electric Rollers - Tranz-Former - CRV Core Recovery Vehicle

Mini-Paver - Mini-Track Paver - Cobra Curber - Scorpion Router - Concrete Paver

Chipper Shredder Vacuums - Tailgate & Truckloader Vacuums

9 cu. yds. - 50 cu. yds. Per Hour, Electric, P.T.O. & Diesel Powered Shaving Mills



105 School House Road
Cheshire, CT 06410 U.S.A.
800-872-5726 (Toll Free), 203-271-1682, 203-271-2596 (Fax)
www.salsco.com, sales@salsco.com