



# ALLIED<sup>®</sup>

*Construction Products, LLC*



*Profit from our experience*



FULL-LINE PRODUCT BROCHURE



### Rammer Hydraulic Impact Hammers (Compact Range)

| Model | Foot Pound Energy Class | Frequency Range | Hydraulic Flow Required Range | Working Weight | Tool Diameter | Recommended Carrier Range |
|-------|-------------------------|-----------------|-------------------------------|----------------|---------------|---------------------------|
|       | ft. lbs.                | bpm             | gpm                           | lbs.           | in.           | lbs.                      |
| 108   | 200                     | 400-1,900       | 3-8                           | 170-190        | 4.09          | 1,800-4,000               |
| 211   | 250                     | 400-1,900       | 4-11                          | 230-260        | 4.69          | 2,600-5,700               |
| 315   | 350                     | 400-1,900       | 4-13                          | 320-350        | 5.16          | 3,500-7,900               |
| 522   | 500                     | 400-1,900       | 5-19                          | 490-540        | 5.91          | 5,500-12,100              |

**Features:**

- Unbreakable trapezoidal tool extends service-life
- No tie rods, no tie-bolts and no side-bolts minimize downtime
- No steel tool bushings (one bushing made of composite wear-resistant material) lower operating costs

### Rammer Excellence Hydraulic Impact Hammers (Small Range)

| Model | Foot Pound Energy Class | Frequency Range | Hydraulic Flow Required Range | Working Weight | Tool Diameter | Recommended Carrier Range |
|-------|-------------------------|-----------------|-------------------------------|----------------|---------------|---------------------------|
|       | ft. lbs.                | bpm             | gpm                           | lbs.           | in.           | lbs.                      |
| 155/E | 150                     | 1,000-2,600     | 4-9                           | 200            | 1.42          | 1,800-4,000               |
| 255/E | 200                     | 600-3,200       | 4-9                           | 240            | 1.57          | 2,600-5,500               |
| 355/E | 350                     | 800-3,000       | 7-15                          | 330            | 1.89          | 3,500-7,900               |
| 455/E | 450                     | 700-2,600       | 11-19                         | 510            | 2.20          | 6,000-11,500              |
| 555/E | 500                     | 600-1,800       | 9-24                          | 610            | 2.83          | 7,100-17,600              |
| 777/E | 750                     | 500-1,700       | 11-32                         | 850            | 3.15          | 9,500-20,900              |
| 999/E | 1,200                   | 500-1,700       | 13-40                         | 1,110          | 3.54          | 12,800-28,700             |

**Features:**

- Integrated one-piece tool bushing design includes thrust ring, upper and lower bushing and dust seal all in one
- RamData III standard on all Excellence Line Hammers, GPS enabled
- Vibration dampening prevents carrier damage and improves operator comfort
- No tie rods for less maintenance
- Upgraded greasing bushings and thrust ring
- Higher Heat models available for 555, 777 & 999\* along with Scaler models

\*High-Heat Box style



- Allied's heat resistant hydraulic hammers have been designed to withstand the toughest of applications that these size hammers may be utilized in
- Heat Resistant seals and heavy duty housing and no housing pads
- Allied's Scaling units give the operator an option to run grease, water and air lines to the bottom of the hammer







## Rammer Excellence Hydraulic Hammers (Large Range)

| Model  | Foot Pound Energy Class | Frequency Range | Hydraulic Flow Required Range | Working Weight | Tool Diameter | Recommended Carrier Range |
|--------|-------------------------|-----------------|-------------------------------|----------------|---------------|---------------------------|
|        | ft. lbs.                | bpm             | gpm                           | lbs.           | in.           | lbs.                      |
| 2577/E | 5,000                   | 450-750         | 37-53                         | 3,880          | 5.31          | 46,300-70,500             |
| 3288/E | 8,000                   | 370-630         | 42-66                         | 5,290          | 5.59          | 57,300-92,600             |
| 4099/E | 11,000                  | 400-560         | 66-93                         | 7,450          | 6.54          | 75,000-121,300            |
| 5011/E | 13,000                  | 370-530         | 74-100                        | 10,470         | 7.48          | 94,800-176,400            |
| 9033   | 18,000                  | 300-520         | 95-121                        | 16,310         | 8.46          | 149,900-264,600           |

**Features:**

- Sound-suppressed housing enhances use in urban areas and provides operator-friendly environment in the cab of carrier
- Ramvalve detects overflow and prevents damage from system overload
- VIDAT System includes vibration dampened tie rods that extend operating life, reduce operating costs and minimize downtime
- Separate greasing channels from the valve body into the upper and lower bushing, which will increase the lifetime of the tool and bushings
- RamData III standard on all Excellence Line Hammers, GPS enabled
- Simple In-Field Lower Tool Bushing Replacement (Except on 9033)

## Rammer Excellence Hydraulic Hammers (Mid-Range)

| Model  | Foot Pound Energy Class | Frequency Range | Hydraulic Flow Required Range | Working Weight | Tool Diameter | Recommended Carrier Range |
|--------|-------------------------|-----------------|-------------------------------|----------------|---------------|---------------------------|
|        | ft. lbs.                | bpm             | gpm                           | lbs.           | in.           | lbs.                      |
| 1322E  | 1,600                   | 500-1,000       | 16-32                         | 1,870          | 3.74          | 19,800-33,100             |
| 1655/E | 2,500                   | 540-920         | 24-34                         | 2,400          | 4.53          | 26,500-44,100             |
| 2166/E | 3,500                   | 430-790         | 32-48                         | 3,090          | 4.92          | 35,300-57,300             |

**Features:**

- Slim housing provides operator with good visibility and better accessibility in trenching and demolition applications
- Ramvalve protects the hammer from damage due to excessive hydraulic input
- VIDAT System includes vibration dampened tie rods that extend operating life, reduce operating costs and minimize downtime
- RamData III standard on all Excellence Line Hammers, GPS enabled
- Simple In-Field Lower Tool Bushing Replacement (Except on 1322E)
- Separate greasing channels from the valve body into the upper and lower bushing, which will increase the lifetime of your tool and bushings (Except on 1322E)
- Idle blow on/off switch at the top of valve housing makes it easier to adjust



## Rammer Performance Hydraulic Hammers (Small Range)

| Model | Foot Pound Energy Class | Frequency Range | Hydraulic Flow Required Range | Working Weight | Tool Diameter | Recommended Carrier Range |
|-------|-------------------------|-----------------|-------------------------------|----------------|---------------|---------------------------|
|       | ft. lbs.                | bpm             | gpm                           | lbs.           | in.           | lbs.                      |
| R01P  | 200                     | 400-1,400       | 4-6.6                         | 209            | 1.57          | 1,800-4,400               |
| R02P  | 350                     | 450-1,400       | 4-10                          | 290            | 1.81          | 2,900-7,300               |
| R03P  | 500                     | 600-1,200       | 6.6-13                        | 400            | 2.09          | 4,400-9,700               |
| R04P  | 600                     | 550-1,050       | 8-16                          | 630            | 2.36          | 6,600-13,200              |
| R05P  | 800                     | 400-1,050       | 9.2-18                        | 720            | 2.68          | 8,800-16,500              |
| R07P  | 1,000                   | 450-950         | 12-24                         | 880            | 2.95          | 11,000-19,800             |
| R10P  | 1,200                   | 450-900         | 13-25                         | 1,170          | 3.35          | 13,200-26,500             |



**Features:**

- Nitrogen accumulator protects carrier's hydraulics for lower repair costs
- The easy to service Performance line hammer allows for less downtime and more production, which equates to lower owning and operating costs for the customer

## Ho-Pac® Vibratory Compactor/Drivers

| Model | Impulse Force | Cycles Per Minute | Hydraulic Flow Required Range | Base Plate Dimensions | Working Weight | Recommended Carrier Weight |
|-------|---------------|-------------------|-------------------------------|-----------------------|----------------|----------------------------|
|       | lbs.          |                   | gpm                           | in.                   | lbs.           | lbs.                       |
| 400B  | 4,000         | 2,000             | 6/9/14/18                     | 13 x 25               | 500            | 3,000-12,000               |
| 700B  | 6,400         | 2,000             | 6/9/14/18                     | 18 x 27               | 750            | 8,000-20,000               |
| 1000C | 8,000         | 2,000             | 12/18/21                      | 24 x 28               | 1,120          | 9,000-30,000               |
| 1600  | 16,000        | 2,100             | 25/30/43                      | 29 x 32               | 1,900          | 19,000-45,000              |
| 2300  | 24,000        | 2,100             | 47                            | 34 x 36               | 2,900          | 35,000-120,000             |
| 4000  | 40,000        | 2,100             | 62/86                         | 42 x 48               | 4,800          | 77,000-150,000             |



**Features:**

- Larger eccentric with mass further away from shaft centerline helps to increase impulse and compaction force
- Sealed bearings (Model 400B, Model 700B and Model 1000C) or oil splash bearing (Model 1600, Model 2300 and Model 4000) provide maintenance-free (no greasing) lubrication
- Four-function valve controls flow, pressure, regeneration and oil flow direction

## Rammer Performance Hydraulic Hammers (Mid and Large Range)

| Model | Foot Pound Energy Class | Frequency Range | Hydraulic Flow Required Range | Working Weight | Tool Diameter | Recommended Carrier Range |
|-------|-------------------------|-----------------|-------------------------------|----------------|---------------|---------------------------|
|       | ft. lbs.                | bpm             | gpm                           | lbs.           | in.           | lbs.                      |
| R12P  | 1,600                   | 380-750         | 16-26                         | 1,830          | 3.54          | 19,800-30,900             |
| R16P  | 2,500                   | 280-860         | 24-32                         | 2,470          | 4.33          | 28,700-46,300             |
| R18P  | 3,500                   | 280-760         | 27-37                         | 2,730          | 4.72          | 33,100-50,700             |
| R25P  | 5,000                   | 390-700         | 35-45                         | 3,640          | 5.31          | 44,100-63,900             |
| R35P  | 7,000                   | 400-700         | 40-52                         | 5,110          | 5.91          | 59,500-88,200             |
| R45P  | 9,000                   | 360-630         | 53-66                         | 6,500          | 6.50          | 70,500-116,800            |

**Features:**

- Idle Blow Protection for R18P, R25P, R35P and R45P. Prevents idle strokes, which avoids internal stress thus extending life span, which improves owning and operating costs
- Standard automatic greasing systems for R18P, R25P, R35P and R45P. Easy to install, protects from premature wear of critical hammer components in order to keep peak performance and extended life span
- Ramdata II service indicator for R18P, R25P, R35P and R45P

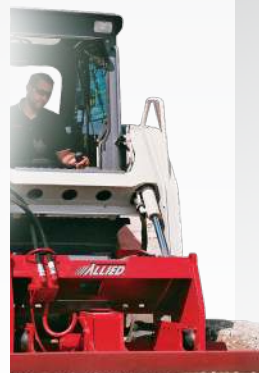


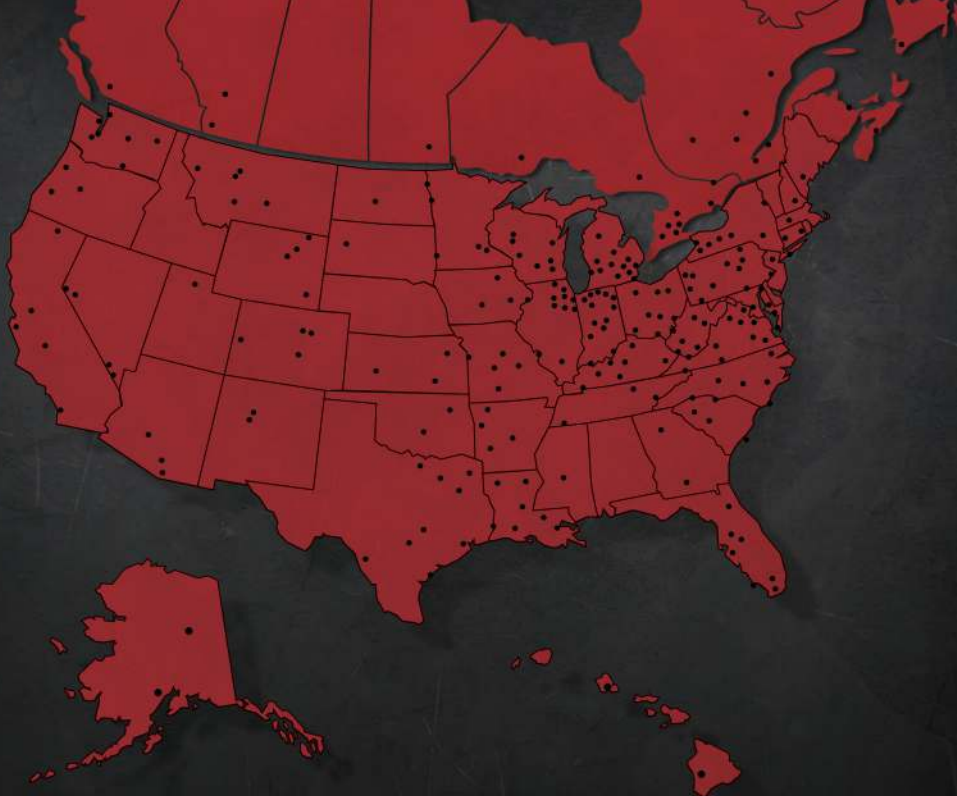
## Skid-Pac™ Vibratory Compactors

| Model | Impulse Force | Cycles Per Minute | Hydraulic Flow Required Range | Base Plate Dimensions | Working Weight | Recommended Carrier Weight |
|-------|---------------|-------------------|-------------------------------|-----------------------|----------------|----------------------------|
|       | lbs.          |                   | gpm                           | in.                   | lbs.           | lbs.                       |
| 1000C | 8,000         | 2,000             | 12/18/21                      | 18 x 72               | 1,110          | 4,000 (Minimum)            |

**Features:**

- Nine square foot base plate covers the outside width of the skid-steer tires or compact track loader tracks to eliminate marks in the soil
- The "beveled" front and back edges of the base plate "push" the soil to assist in the leveling of the sub bases





Allied Distributors are personally selected by the Allied staff and periodically reviewed to make sure they are offering the best, most informative service possible. They have made a commitment to Allied by being fully-prepared with repair tools,

knowledge and the best replacement parts in the business. Through this partnership, Allied continues to change with the markets and meets demands by supplying innovative and improved products to the end-users.



3900 Kelley Avenue, Cleveland, Ohio 44114  
Tel: 216-431-2600 Fax: 216-431-2601  
e-mail: [Sales@AlliedCP.com](mailto:Sales@AlliedCP.com)  
website: <http://www.AlliedCP.com>