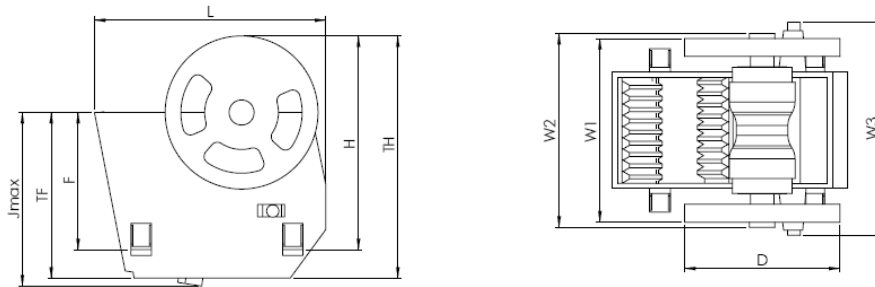


# JAW CRUSHER CJ SERIES

## CJ612



### DIMENSIONS (mm)

| Jmax, | TF    | F    | L     | H    | TH    | W1    | W2    | W3    | D     |
|-------|-------|------|-------|------|-------|-------|-------|-------|-------|
| 2 700 | 2 520 | N.A. | 3 604 | N.A. | 3 508 | 2 208 | 2 347 | 2 826 | 1 865 |

### WEIGHTS (kg)

| Flywheel | Toggle Plate | Toggle Seat | Swing Jaw Complete | Frame Complete | Total Weight (approx.) |
|----------|--------------|-------------|--------------------|----------------|------------------------|
| 2 400    | 450          | 65          | 12 500             | 22 000         | 39000                  |

### PERFORMANCE

|                      |   |    |     |         |         |         |         |         |         |         |
|----------------------|---|----|-----|---------|---------|---------|---------|---------|---------|---------|
| Feed Opening (mm)    | 1 200 x 1 100   |    |     |         |         |         |         |         |         |         |
| Max feed size (mm)*  | 990   |    |     |         |         |         |         |         |         |         |
| Max motor power (kW) | 160   |    |     |         |         |         |         |         |         |         |
| CSS (mm)             |   | 75 | 100 | 125     | 150     | 175     | 200     | 225     | 250     | 275     |
| Nominal Cap MTPH     |   | -  | -   | 300-395 | 355-465 | 405-530 | 455-595 | 505-660 | 560-735 | 610-805 |
| Standard Jaw Plates  | Coarse Corrugated (CC)/Sharp Teeth (ST)/Heavy Duty (HD) |    |     |         |         |         |         |         |         |         |

\* Apply for regularly shaped material. Occasional larger lumps can be accepted, but if material is irregularly shaped, difficulties may be also experienced with smaller lumps.

The left figures refer to fines removed from feed and the right refers to fines included in the feed.