

# Screeds



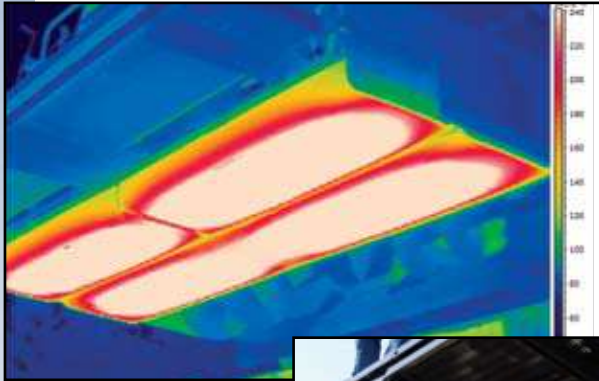
# ROADTEC

an Astec Industries Company

# All Electric Heat

## To Build a Better Road You Need a Better Screed

Roadtec offers you screeds that are simpler to operate and maintain than competing brands and are much more rugged and functional. That's why professional roadbuilders rely on Roadtec/Carlson screeds time and time again. Each of the five model series comes in 8 foot (2.4 m) and 10 foot (3.0 m) versions with a variety of extension options. The screeds can be operated with single or dual grade control mode, grade and slope control, or manually. All our screeds are designed and built in the U.S.



Heat is distributed evenly across the plate after only 30 minutes of heating. The heating elements are heavy-duty and only need to run at 1/3 rated capacity to keep the screed hot.



## Electric Heat The Right Way

Screed plates on all models are heated electrically, which is a great advantage over smoky, diesel-heated screeds. But not every electric screed can give you even heat. With the unique way we distribute heat above the screed plate, we can assure you even temperatures front to back and side to side. Just set the thermostat to the temperature you want. No smoke. No warped plates.

Changing out heating elements shouldn't take all day. You'll appreciate the fact that you can remove and replace the heating elements through a side access door above the main screed plate. There's no need to take off the whole plate. The elements themselves are heavy-duty, both in structure and performance; so they'll last a long time. You can get replacements off the shelf at industrial supply houses or from Roadtec Parts.

A 34kW generator powers the elements and also provides plenty of extra current for other electrical needs. Outlets for plugging in other electrical devices are provided.



A side access door makes changing out heating elements easy.



110 Volt outlets for lights or tools.



Plug connection for extension heat.



Clean, fume-free electric heat. Roadtec pioneered electric screeds in the U.S. and has been building a full line of electric screeds since 2000.



## The Roadtec Eagle Screed: Our Best Yet

The latest in screed technology and heavy duty structural design are combined to bring you this top-of-the-line series. Heated, vibratory rear extensions let you achieve smoothness specs with ease. Thanks to the exclusive Roadtec subframe, the time it takes to remove the screed plate is half that of conventional designs. And reversible, U-shaped plates provide longest wear life. Those are just a few of the advantages of an Eagle screed. Add superior control features and better visibility, and you can't go wrong with this one.

### Eagle Screed Highlights

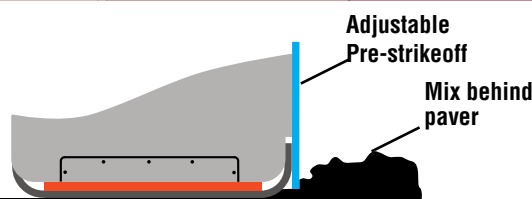
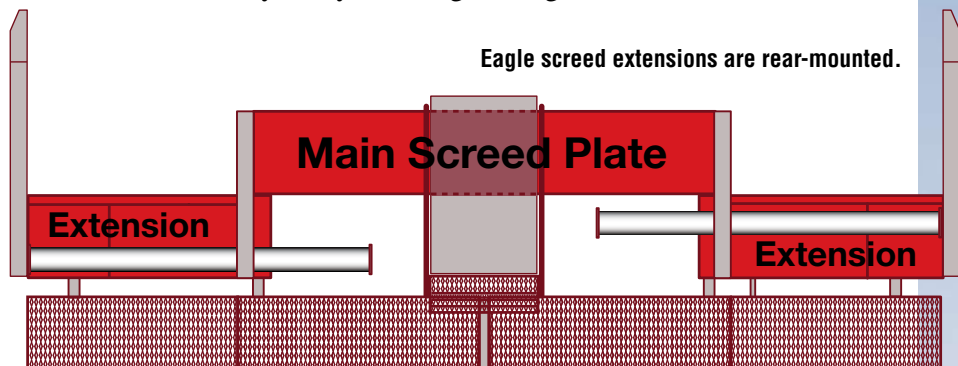
Trailing (rear-mounted) extensions favor more even compaction across the mat. It's the preferred design to use when consistent mat density is key. The Eagle rear-mounted vibratory hydraulic extensions move on dual guide tubes and greaseless Teflon® bushings.

Both edges of the Eagle screed plate are curved. You can turn the plate around for a fresh leading edge and twice the wear life. That's true of extension plates, too.

Adjustable pre-strikeoffs on the main screed and the extensions come in especially handy for thin-lift paving. The Eagle 8 end gates can be swung in for shipping to narrow the load to 8 feet (2.5 meters).

### Eagle Extension Options

Paving width without bolt-on extensions is 15'-6" (4.7 m) for the Eagle 8, and for the Eagle 10 it's 19'-6" (5.9 m). We offer bolt-on right-hand and left-hand extensions for both the Eagle 8 and the Eagle 10 in the following length: 16 inches and 28 inches (40 - 71 cm). Please see the table on the last page for maximum paving widths for each model. One or 2-foot (28-56 cm) cutoff shoes are also offered in right-hand and left-hand versions, and notched wedge joint attachments are available.



Adjustable pre-strikeoffs are standard on all our main screeds as well as on Eagle Series and Carlson extensions.



The exclusive Eagle screed sub frame.



Two-piece, spring-loaded endgates have replaceable wear plates.

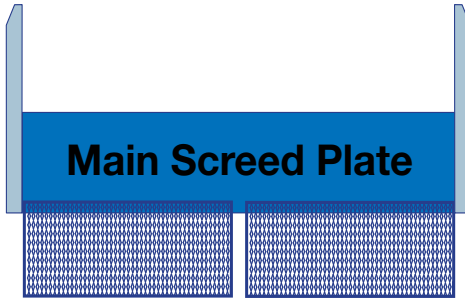


Two guide tubes on each side support the Eagle extensions.

# Roadtec S&SC Series

## The S & SC Series: Go-Anywhere Proven Performers

Versatility is the name of the game when you're running these screeds. The standard, vibratory S8 or S10 models are work horses with the option to extend with bolt-ons. The S8-C and S10-C models features Carlson EZII front-mounted, hydraulic extensions. Like the Eagle series these models have pre-strikeoffs, individually adjustable lead and tail crowns, and adjustable angle of attack. Power Crown is standard on all our screeds.



S Series screeds can use bolt-on extensions.



## The S Series: Straightforward Solution for many Applications

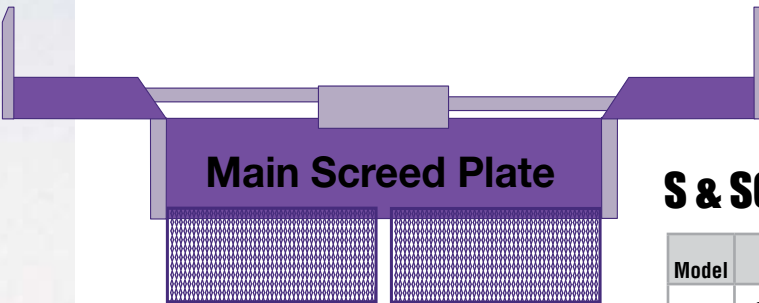
Roadtec's standard, vibratory screeds with hydraulic strikeoffs comes 8 feet (2.4 m) or 10 feet (4.1 m) wide. Strikeoffs can be articulated from 6.6% positive to 3.3% negative. Auger and screed extensions fit both the S-8 and the S-10 models. These tough, reliable screeds will serve you well for a wide range of projects.

## The SC Series: Front Extensions in an Easy-To-Transport Design

SC series vibratory screeds feature 8-inch wide Carlson EZ II-style hydraulic extensions that are outfitted with heat and supported by brass wear plates. They let you pave up to 13'-6" (4.1 m) with the S-8C and on the 17' (5.2 m) with the S-10C.

## Bolt-On Extensions

All models can use bolt-on extensions. Please see the last page to find out maximum paving widths for each model.



SC Series with hydraulic extensions.

## S & SC Series Extension Options

Model	S Series Extensions					SC Series Extensions				Taper Joint Attachments	
	6"	H 12"	H&V 24"	H, C 24"	H&V 36"	H&V 6"	H&V 12"	H&V 18"	H&V 24"	12"	18"
S-8	•	•	•	—	—	—	—	—	—	—	—
S-10	•	•	•	•	•	—	—	—	—	—	—
S-8C	•	•	•	—	—	•	•	•	•	•	•
S-10C	•	•	•	•	•	•	•	•	•	•	•

H = Heat, H & V = Heat and Vibration, C = Crownable. Extensions come in right-hand and left-hand versions. Complete extension packages, including augers, bearings, brackets, and supports are available. Additional cut-off shoes available.



Top: Front view of SC screed with extension retracted.  
Right: Rear view of SC screed with extensions out.





Roadtec and Carlson are Astec Industries companies.

## The Carlson EZ Series: Front Extensions and Tapered Plates

The EZ Series from Carlson features electrically heated vibratory screed plates and extensions. The patented, tapered shape of the Carlson main screed plate assures that material is moved toward the outside for a uniform mat no matter whether extensions are in or out. Carlson EZ screeds also feature a food warming oven to heat crew meals.

### Adjustable Angle of Attack on Extensions

The optional angle of attack adjustments for the extensions make Carlson the industry's preferred front-mounted extension. A 3/4-inch wrench is all that is required to make the adjustment.

### Carlson EZIV: High-Composite Bushings & Chrome Slide Track

With hydraulic, vibratory extensions supported on heavy-duty, high-strength slide tracks this series offers paving widths from 8 to 19 feet (2.4 - 5.8 m). EZIV extensions have pre-strikeoffs. Optional hydraulic berm builders are offered.

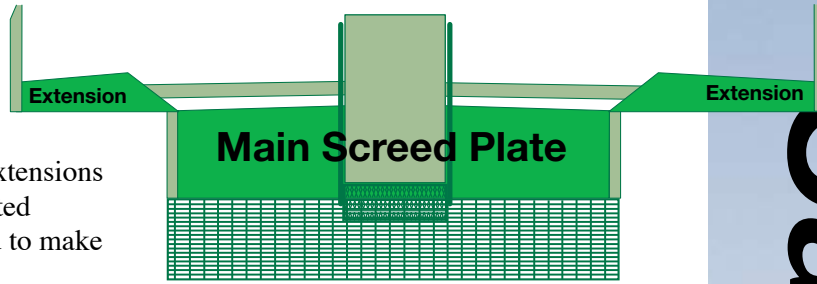
### Carlson EZIII: Less Weight, All the Performance

Carlson EZIII screed extensions move on adjustable brass slide tracks. The paving width of the EZIII-8 is 13'-6" feet (4.1 m), and the paving width of the EZIII-10 III is 17 feet (5.2 m). These quick-reacting screeds are ideal for commercial paving.

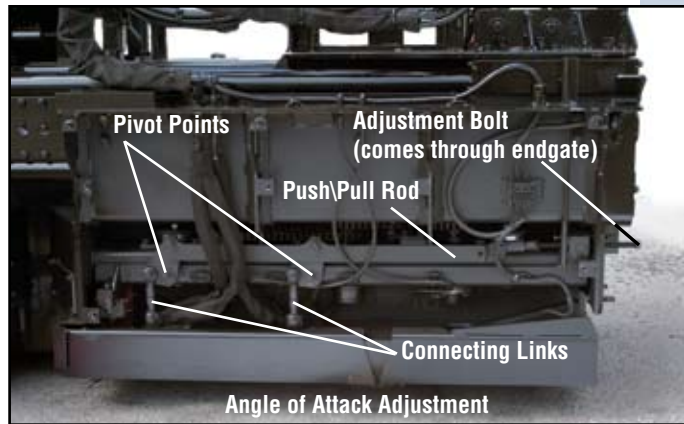
### Carlson EZ Extension Options

Model	Extensions			Taper Joint Attachments			Berm Builder	
	H 12"	H 18"	H 24"	12"	18"	24"	manual	hydraulic
EZIII-8	•	•	•	—	—	—	•	•
EZIII-10	•	•	•	—	—	—	•	•
EZIV-8	•	•	•	•	•	•	—	•
EZIV-10	•	•	•	•	•	•	—	•

H = Heated. Extensions come in right-hand and left-hand versions. Complete extension packages, including augers, bearings, brackets, and supports are available. Additional cut-off shoes available.



Carlson screeds are designed with a front taper which minimizes material pinching.



Front view of extension with front plate removed.



Side view. Angle of attack can be individually adjusted on Carlson main screeds and screed plates, giving the operator maximum ability to match densities and texture.



The famous Carlson food warming oven is located in a drawer at the back of the screed.

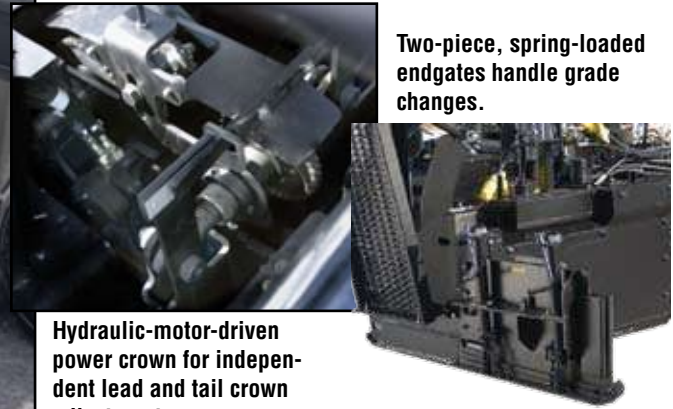
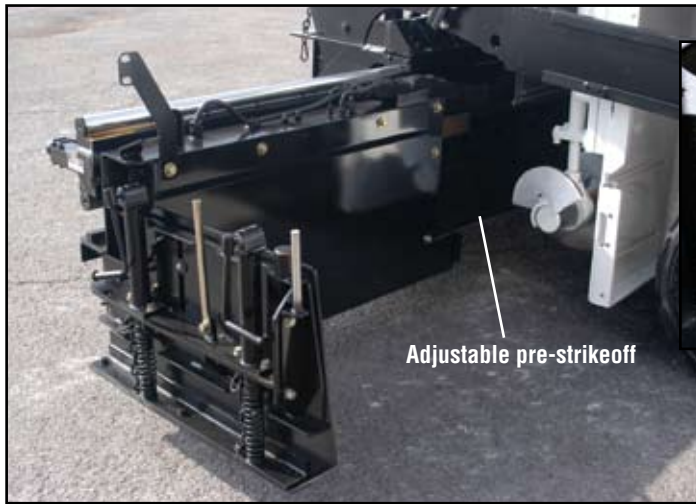


Carlson Screeds

# Exclusive Features

## The Crew Will Appreciate These Convenient Features

Along with electric screed heat and heating elements that can be changed out without taking the screed apart, all our screeds have the following as standard equipment: Pre-strikeoffs, dual control stations with lockable vandal covers; detachable remote controls; 34kW generator with dedicated hydraulic pump; spring-loaded, two-piece end gates; and motorized individual lead and tail crown adjustments (power crown).



Lockable vandal covers secure on-board and remote controls.





# Product Details

	S-8	S-10	S-8C	S-10C	EZIII-8	EZIII-10	EZIV-8	EZIV-10	Eagle 8	Eagle 10
<b>Standard Paving Width</b>	8' (2.4m)	10' (3m)	8' (2.4m) to 13'-6" (4.1m)	10' (3m) to 17' (5.2m)	8' (2.4m) to 13'-6" (4.1m)	10' (3m) to 17' (5.2m)	8' (2.4m) to 13'-6" (4.1m)	10' (3m) to 19' (5.8m)	8' (2.4m) to 15'-6" (4.7m)	10' (10') to 19'-6" (5.9m)
<b>Max. Paving Width*</b>	16' (4.8m)	30' (9.1m)	16' (4.9m)	25' (7.62m)	20' (6m)	25' (7.62m)	24' (7.3m)	25' (7.62m)	20' (6m)	26' (7.9m)
<b>Screed Plate Depth</b>	26" (660mm)	32" (0.8m)	26" (660mm)	26" (660mm)	26" (660mm)	26" (660mm)	26" (660mm)	26" (660mm)	20" (508mm)	20" (508mm)
<b>Thermostatically-Controlled, Screed Heat</b>	yes	yes	yes	yes	yes	yes	yes	yes	yes	yes
<b>Power Crown with Individual Lead and Tail Adjustment</b>	3" (75 mm) Pos. 1" (25 mm) Neg.	3" (75 mm) Pos. 1" (25 mm) Neg.	3" (75 mm) Pos. 1" (25 mm) Neg.	3" (75 mm) Pos. 1" (25 mm) Neg.	3" (75 mm) Pos. 2 1/2" (63 mm) Neg.	3" (75 mm) Pos. 2 1/2" (63 mm) Neg.	2 1/2" (63 mm) Pos. 2 1/2" (63 mm) Neg.	3/4" (19 mm) Neg.	3" (75 mm) Pos. 1" (25 mm) Neg.	3" (75 mm) Pos. 1" (25 mm) Neg.
<b>Adjustable Angle of Attack</b>	yes	yes	yes	yes	yes	yes	yes	yes	yes	yes
<b>Hydraulic Strikeoffs</b>	3' (0.9m)	4' (1.2 m)	—	—	—	—	—	—	—	—
<b>Strikeoff Articulation</b>	6.6% Positive to 3.3% Negative	6.6% Positive to 3.3% Negative	—	—	—	—	—	—	—	—
<b>Pre-Strikeoff Main Screed</b>	yes	yes	yes	yes	yes	yes	yes	yes	yes	yes
<b>Adjustable Vibration</b>	0-3000 VPPM	0-3000 VPPM	0-3000 VPPM	0-3000 VPPM	0-4600 VPPM	0-4600 VPPM	0-4600 VPPM	0-4600 VPPM	0-3000 VPPM	0-3000 VPPM
<b>Reversible Screed Plate</b>	—	—	—	—	—	—	—	—	yes	yes
<b>Two-piece, Spring-loaded End Gates</b>	yes	yes	yes	yes	yes	yes	yes	yes	yes	yes
<b>Hydraulic Extension Dimensions</b>	—	—	Two at 2'-9" (0.8m) wide; 8" deep	Two at 3'-6" (1 m) wide; 8" deep	Two at 2'-9" (0.8m) wide; 8" deep	Two at 3'-6" (1 m) wide; 8" deep	RH 4' (1.2 m) wide LH 3' (0.9 m) wide 8" deep	RH 5' (1.5 m) wide LH 4' (1.2 m) wide 8" deep	Two at 3'-9" (1.1m) wide; 20" (508 mm) deep	Two at 4'-9" (1.4m) wide; 20" (508 mm) deep
<b>Standard Hydraulic Extensions Mounting</b>	—	—	front-mounted	front-mounted	front-mounted	front-mounted	front-mounted	front-mounted	rear-mounted	rear-mounted
<b>Extension Support</b>	—	—	Bronze Slide Tracks	Bronze Slide Tracks	Bronze Slide Tracks	Bronze Slide Tracks	High Composite Bushings & Chrome Slide Tracks	High Composite Bushings & Chrome Slide Tracks	Dual 5" Guide Tubes & Teflon® Bushings	Dual 5" Guide Tubes & Teflon® Bushings
<b>Reversible Extension Plates</b>	—	—	—	—	—	—	—	—	yes	yes
<b>Pre-Strikeoffs Extensions</b>	—	—	—	—	—	yes	yes	yes	yes	yes
<b>Adjustable Angle of Attack on Extensions</b>	—	—	—	—	yes	yes	yes	yes	yes	yes
<b>Max. Extension Slope</b>	—	—	9% positive	9% positive	9% positive	9% positive	9% positive	9% positive	14% Positive/ 5% Negative	14% Positive/ 5% Negative
<b>Accessory Outlets</b>	4	4	4	4	8	8	8	8	4	4
<b>Accessory Current</b>	4KW/120 Volts	4KW/120 Volts	4KW/120 Volts	4KW/120 Volts	5.5kW/120 Volts	5.5kW/120 Volts	5.5kW/120 Volts	5.5kW/120 Volts	4KW/120 Volts	4KW/120 Volts
<b>Food Warming Oven</b>	—	—	—	—	yes	yes	yes	yes	—	—
<b>Full-length, Hinged Walkway Width</b>	18" (457 mm)	18" (457 mm)	18" (457 mm)	18" (457 mm)	20" (508 mm)	20" (508 mm)	20" (508 mm)	20" (508 mm)	18" (457 mm) tele-scoping	18" (457 mm) telescoping
<b>Berm Builder Option</b>	—	—	—	—	yes	yes	yes	yes	—	—
<b>Screed Weight (approx.)</b>	5,300 lbs	6,400 lbs	5,700 lbs	6,900 lbs	5,200 lbs	6,100 lbs	6,250 lbs	6,900 lbs	7,200 lbs	8,500 lbs

\* See previous pages for optional extension information



Eagle Series



S Series



Carlson EZ Screeds

©2005 Roadtec 2.05 WMS