

8' (2.5 m) ASPHALT PAVER

RP-175e



Asphalt Paver RP-175



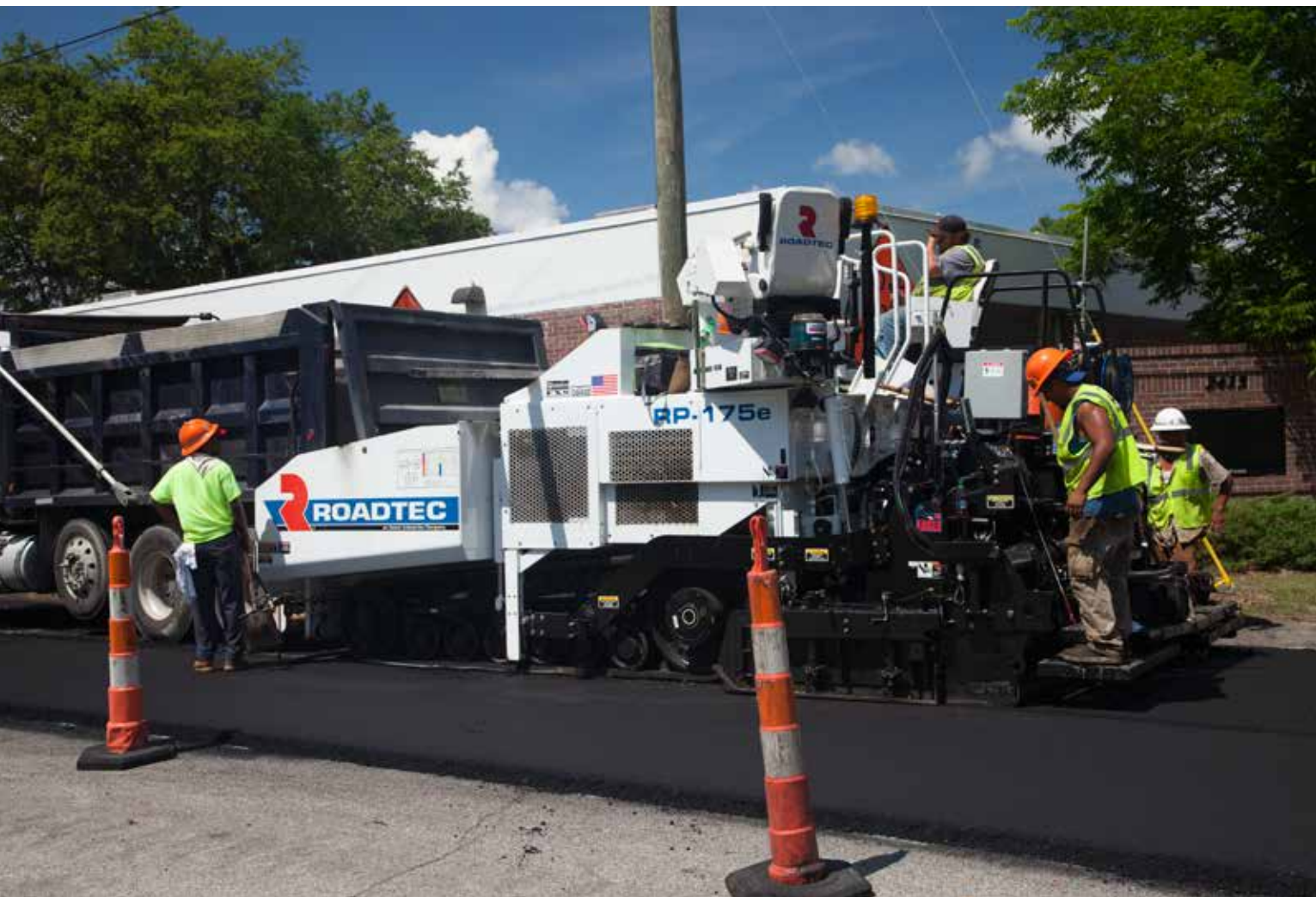
ENGINE

Tier 4F, Cummins® QSB 6.7 173 hp (129 kW) @ 2,200 rpm

SHIPPING WEIGHT

32,500 lbs (14,741 kg)

FEATURES



RP-175 – Rubber-Track Paver

The RP-175 is a powerful, compact 8' (2.5 m) wide rubber-track asphalt paver designed to work in all types of sub-grades and paving applications. Full counter-rotate ability and track flotation allow the RP-175 to maneuver and pave in tight areas without sacrificing tractive effort or pushing power.

Anti-Segregation

Like all Roadtec pavers, RP-175 features Roadtec's exclusive anti-segregation design of the feed tunnel, the feed tunnel discharge, and the rear augers. The narrow shipping width of this paver allows quick and easy transportation between job locations.

Track Paver

Roadtec track pavers have a fully oscillating track frame to provide a smooth ride and lay a smoother mat. All Roadtec Asphalt Pavers start with an extremely strong frame completely fabricated, welded and assembled by us.

Visibility

Seats of the dual operator stations can swing out beyond the sides of the machine to give the operator an excellent view down the sides of the machine, back to the screed and down to the material tunnel.

Augers

The auger assembly on Roadtec pavers can be hydraulically raised and lowered. This feature can assist in eliminating segregation in certain mixes and is very helpful during the loading and unloading process as well as constructing “supers”.

Feed System

All Roadtec pavers feature a 13” (330 mm) high conveyer opening for excellent throughput and have wear resistant liners. Each conveyer is now wider and independently driven so material delivery can be fine-tuned for each side. The space between the conveyers has been minimized which allows mix to be conveyed out as one uniform flow, greatly reducing segregation.

Delta Plate and Close Proximity of Augers to Conveyors

The Delta Plate defines the front wall of the material tunnel, preventing mix from rolling forward under paver, a main cause of centerline segregation. It also removes mix from the conveyors providing better conveyor efficiency.



RP-175 Options

Tunnel Extensions

- 12” (305 mm) tunnel extensions

Auger Extensions

- 12” (305 mm) auger extensions

Auger & Tunnel Extension Package

- 6’ (1.8 m) auger & tunnel extensions for each side

Lubrication

- Automated lubrication system

Release Agent Spray Down System

- 20 gallon (75.7 l) tank & pump with retractable hose

Additional Lighting

- Night light package -(6) 24V HID lights
- Airstar® balloon light assembly –500W halogen bulbs, fan, telescoping pole, two brackets & case
- Laser pointer alignment guide

Miscellaneous

- Steel tracks in lieu of rubber tracks
- Hopper insert (For use with Shuttle Buggy® MTV)
- Guardian™ telematics system
- 4 electrical outlets

Truck Hitch

- Controls rollers that engage to truck’s wheels (replaces push rollers)

ENGINE

- Tier 4F, Cummins® QSB 6.7 173 hp (129 kW) @ 2,200 rpm

SHIPPING WEIGHT

- 32,500 lbs (14,741 kg)

CHASSIS

- 1/2" (12.7 mm) thick grade 80 continuous side sheets

ELECTRICAL SYSTEM

- Two 4D batteries & 95 amp alternator
- 24v system with master disconnect switch
- Electric-over-hydraulic solenoids with manual override.

PROPEL SYSTEM

- Variable-displacement hydraulic pumps
- Two-speed hydraulic motor. Direct hydraulic, single speed planetary final drives.
- Single joystick control

COOLING SYSTEM

- (2) Low noise, variable speed, hydraulically-driven fans

SPEEDS

- Paving speed: 0-200 fpm (60 m/min)
- Travel speed: 0-7.5 mph (12 km/hr)

FRICTION DRIVE UNDERCARRIAGE

- 14" (355 mm) wide, steel-reinforced, smooth tread rubber track
- Automatic, hydraulic track tension system
- [6] sets of rollers on [3] oscillating bogies

FUME EXTRACTION SYSTEM

- Clearview FXS® fume extraction system. Clear view to the front and of the augers.

OPERATOR STATIONS

- Hydraulic swing Comfort Drive™ operator stations. Operator stations can rotate out past edge of machine for increased visibility. Controls move with seat.
- Armrest Comfort Drive™ finger tip paver function control.

FRONT HOPPER CAPACITY

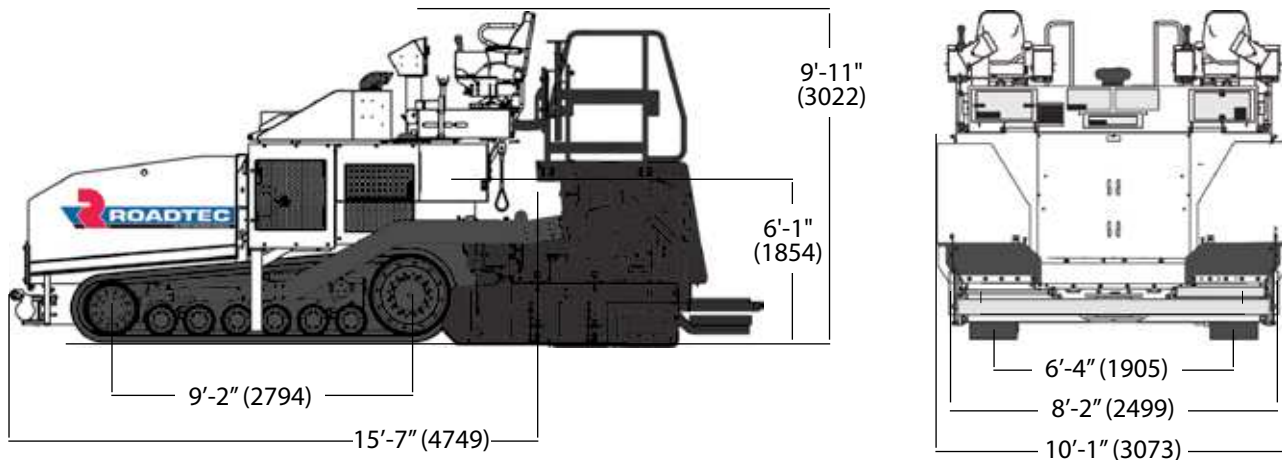
- 11.5 ton (10.4 mt) / 212 ft³ (6 m³) . Does not include tunnels.

FEED SYSTEM

- Independently driven, variable-speed feeder conveyors
- Center chromium carbide clad conveyor plates. Bolt free design. Sonic feeder control system
- Cast, 16" (406 mm) dia., 0.75" (19 mm) thick, ni-hard augers. Hydraulically raise, lower and tilt auger assembly.
- Electric flow gates for easy control of head of material

SERVICE CAPACITIES

- Fuel Tank..... 81.5 gal (308 l)
- Hydraulic Fluid Tank..... 66 gal (249 l)
- Cooling System 8.75 gal (33 l)



SHIPPING WEIGHTS & LENGTHS (APPROXIMATE)

TRACTOR ONLY	32,500 lbs (14,741 kg) / 15'-7" (4749)	CARLSON EZIV-8	6,350 lbs (2,880 kg) / 19'-11 7/8" (6093)
S-8	5,300 lbs (2,404 kg) / 19'-3 1/4" (5874)	EAGLE 8	7,500 lbs (3,402 kg) / 21'-9 1/16" (6631)
CARLSON EZIII-8	5,500 lbs (2,495 kg) / 19'-9 13/16" (6040)		

Dimensions in brackets are mm.

151103

Specifications are subject to change without notice.

© 2015 Roadtec, Inc. All Rights Reserved

ROADTEC an Astec Industries Company

800 MANUFACTURERS RD • CHATTANOOGA, TN 37405 USA • 800.272.7100 • FAX 423.267.7104 • roadtec.com

