



LOG WASHERS

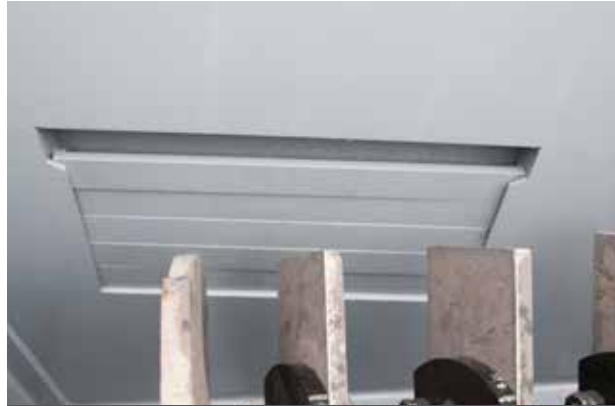
Up to 190 TPH

- Integrity of shafts and drivetrain enhanced by a rigid, **heavy-duty skid frame**. ■
- Spiral paddle design **reduces impact loading on paddles** and increases throughput. ■
- Bottom clean-out doors allow for **convenient maintenance** versus digging out material by hand. ■
- Motor, drive parts and pillow block bearings are **standard, off-the-shelf components** for easy replacement. ■

FEATURES



A532 PADDLES



ADJUSTABLE OVERFLOW GATE



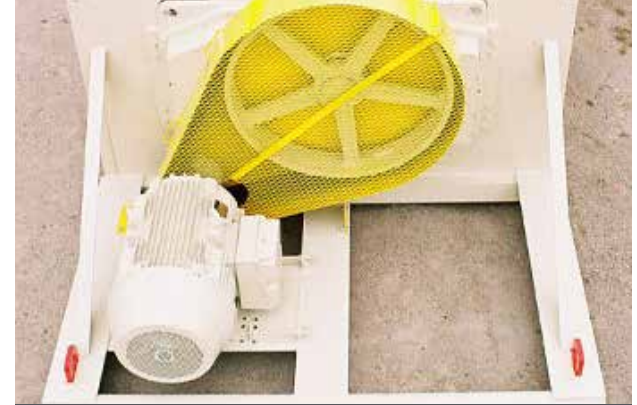
SLINGER PROTECTS LOWER BEARING



EASY ACCESS TO DRAIN AND FILL



SPIRAL PADDLES FOR CONTINUOUS AGITATION



GUARDED DRIVE SYSTEM

LOG SHAFT

- Twin shafts with paddles
- Paddle bases are protected with adjustable A532 wear paddles
- Extended shaft and slinger protects lower bearing from water leakage

DRIVE SYSTEM

- Electrical 3-phase, 60Hz, 460V motor
- Gear reducer
- Belt and guarding

WASH BASIN

- Adjustable overflow gates
- Heavy-duty skid frame
- Lifting points
- Drain for easy clean out



CLEAN OUT DOORS FOR BELLY PAN



OVERFLOW TROUGH



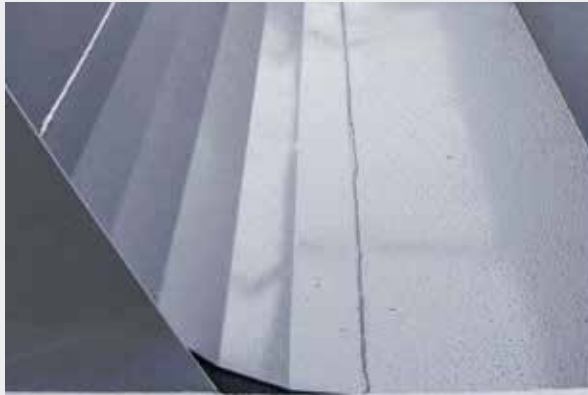
PROTECTIVE GUARDING

- DISCHARGE CHUTE
- OVERFLOW TROUGH
- HYDRAULIC DRIVE
- CLEAN OUT DOORS FOR BELLY PAN
- SUPPORT LEGS FROM 2°-10°
- ADJUSTABLE SUPPORT LEGS
- PERSONAL SAFETY COVERS
- GUARDING

IN-STOCK PARTS



WEAR SLEEVE AND LOWER SEAL



BELLY PAN



A532 PADDLES AND WEAR SHOES

- STAINLESS STEEL WEAR SLEEVE
- HEAVY-DUTY RUBBER LOWER SEAL
- HEAVY-WALLED STEEL PIPE SHAFTS
- RUBBER WEAR SHOES
- PADDLES
- BELLY PANS
- ELECTRIC OR HYDRAULIC DRIVE COMPONENTS
- LOWER BEARING RETROFIT KITS FOR OTHER MANUFACTURERS' WASHERS

SPECIFICATIONS

LOG WASHER						
Screw Size in x ft (mm x m)	Screw Diameter inch (mm)	Max. Material Size inch (mm)	Speed RPM	Motor Size HP (kw)	Capacity TPH (MTPH)	Estimated Empty Weight lbs (kg)
24" x 20' (610 x 6)	24" (610)	2" (51)	40	40 (29.5)	30 - 60 (26 - 53)	30,000 (13,608)
36" x 25' (914 x 8)	36" (914)	3" (76)	33	75 (55.0)	50 - 125 (44 - 111)	33,500 (15,195)
36" x 30' (914 x 9)	36" (914)	3" (76)	33	100 (73.5)	50 - 125 (44 - 111)	38,500 (17,463)
36" x 35' (914 x 11)	36" (914)	3" (76)	33	150 (110.5)	50 - 125 (44 - 111)	48,000 (21,772)
38" x 30' (965 x 9)	38" (965)	2.5" (64)	33	150 (110.5)	60 - 140 (53 - 125)	41,000 (18,597)
38" x 35' (965 x 11)	38" (965)	2.5" (64)	33	150 (110.5)	60 - 140 (53 - 125)	49,000 (22,226)
44" x 25' (1,118 x 8)	44" (1,118)	4" (102)	26	125 (92.0)	75 - 175 (67 - 156)	53,500 (24,267)
44" x 30' (1,118 x 9)	44" (1,118)	4" (102)	26	150 (110.5)	75 - 175 (67 - 156)	57,000 (25,855)
44" x 35' (1,118 x 11)	44" (1,118)	4" (102)	26	200 (147.0)	75 - 175 (67 - 156)	71,000 (32,205)
46" x 30' (1,168 x 9)	46" (1,168)	3.5" (89)	24	200 (147.0)	100 - 190 (90 - 170)	61,000 (27,669)
46" x 35' (1,168 x 11)	46" (1,168)	3.5" (89)	24	200 (147.0)	100 - 190 (90 - 170)	74,000 (33,566)

PHOTO GALLERY

