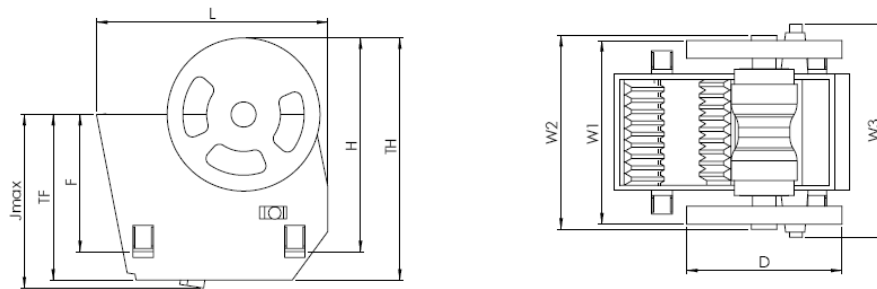


JAW CRUSHER CJ SERIES

CJ409



DIMENSIONS (mm)

Jmax,	TF	F	L	H	TH	W1	W2	W3	D
1 780	1 580	N.A.	2 554	N.A.	2 383	1 723	1 882	N.A.	1 605

WEIGHTS (kg)

Flywheel	Toggle Plate	Toggle Seat	Swing Jaw Complete	Frame Complete	Total Weight (approx.)
1 050	200	20	5 100	8 100	13 200

PERFORMANCE

Feed Opening (mm)	895 x 660								
Max feed size (mm)*	600								
Max motor power (kW)	75								
CSS (mm)	50	75	100	125	150	175	200	225	250
Nominal Cap MTPH	85-115	100-160	125-200	150-235	175-275	200-320	-	-	-
Standard Jaw Plates	Corrugated (C) / Sharp Tooth (ST)								

* Apply for regularly shaped material. Occasional larger lumps can be accepted, but if material is irregularly shaped, difficulties may be also experienced with smaller lumps.

The left figures refer to fines removed from feed and the right refers to fines included in the feed.